



People Use Energy Differently

Comparing electric bills is like comparing apples to oranges. No two families use electricity in the same way, and they do not have identical living habits or appliances.

One family may delight in salads and sandwiches, while another may insist on large meals. One family may live in front of the television, while another may prefer to read for entertainment. One family may operate their air conditioning throughout the day, while another may only operate it during the hottest part of the day. The size of a family automatically means more bathing, cooking and washing also.

Customers are on different billing cycles. If you compare bills on different cycles, it will not give you an accurate comparison.

The best way to monitor your electricity use is to save and compare your bills, preferably using ones from the same month, but different years. Remember to consider rate increases, fuel cost adjustments, new taxes, and weather. This method can also reveal how your conservation measures are reducing your electricity use.



MONITORING ELECTRICITY USER GUIDE



Your Touchstone Energy® Cooperative 

1.800.342.3616
www.flintenergies.com

Meter Reading

Understanding Electricity Use

Your electric meter is a precision instrument that is manufactured to exact specifications. Its operation is based upon one of the most dependable forces in the world - the precise pulse of AC electricity.

To ensure accuracy, the manufacturer and Flint Energies inspect the meter before it is installed. We also periodically inspect meters after installation.

An electric meter is seldom faulty. However, when it is, it is usually to your advantage. Faulty meters may run slower, but they almost never run faster.

The Measure of Electricity – Kilowatt-Hours

Electricity is measured in kilowatt-hours (kwh). A kilowatt is 1,000 watts. Ten 100-watt light bulbs equal one kilowatt, and in an hour they consume one kilowatt-hour of electricity.

How to Read Your Electric Meter

Some Flint Energies members have easy-to-read digital display meters while others have meters that feature dials. The instructions below will help you read an electric meter with dials.

Once you are familiar with it, the electric meter is as easy to read as a clock. A short calculation shows you how much electricity you use each day or hour.

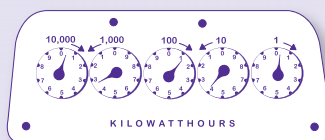
The figure above each dial indicates the number of kilowatt-hours that can be recorded on that dial. Each time a dial makes 10 revolutions, the dial to the left will make one revolution, similar to the way your car odometer records mileage.

As you read your meter, notice that some dials rotate clockwise and some rotate counterclockwise. If the dial pointer is between numbers, record the smaller number. If a dial's pointer is directly on a number, then look at the dial to the right. If its pointer has not passed zero, record the smaller number. If its pointer has passed zero, record the number towards which the dial is pointing. For example, in the figure below, the dial on the left is directly on five, but the dial on the right has not reached zero, so the reading on the left dial is four. Place the two readings together and the meter reading is 49.

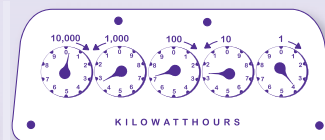
After reading your meter, record the total figures as shown in the example below.



NOVEMBER READING	03724
OCTOBER READING	03140
KWH USED	584



OCTOBER READING
03140



NOVEMBER READING
03724

How to Calculate Kilowatt-Hour Use

You can calculate kilowatt-hour use by subtracting the previous reading from the current reading. This is how your electric bill is calculated each month.

Begin your readings on the “meter reading” or the “service to” date listed on your last electric bill. By subtracting the previous day's reading from the current day's reading, you obtain the total kilowatt-hours used during a 24-hour period. By adding the daily figures into a weekly total, and the weeks into a monthly total, you can begin to see how much electricity your family uses monthly and how your use fluctuates with family activities.

Conservation Reducing Energy Use

Follow these important conservation tips to keep your electric meter spinning as slowly as possible, while maintaining a comfortable home:

- Insulate. Ceiling R-30; Floor R-11; Walls R-13 with vapor barrier.
- Install storm windows and doors.
- Weather-strip and caulk exterior doors/windows.
- Keep fireplace damper closed when not in use.
- Keep heating/cooling system in good condition.
- Keep filters clean.
- Use the coolest and least amount of water possible for washing and bathing.
- Heat at 68°F or lower. Cool at 78°F or higher.

Energy use directly affects your bill.